



SPARE PARTS EXPLODED VIEW
WALL-HUNG GAS BOILERS

Models

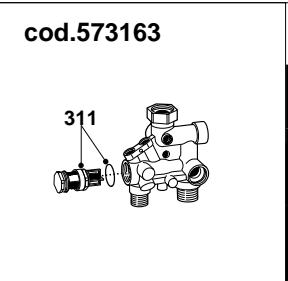
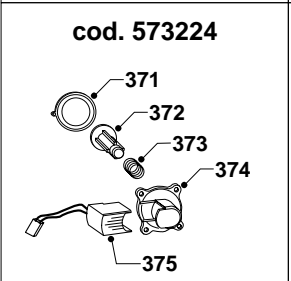
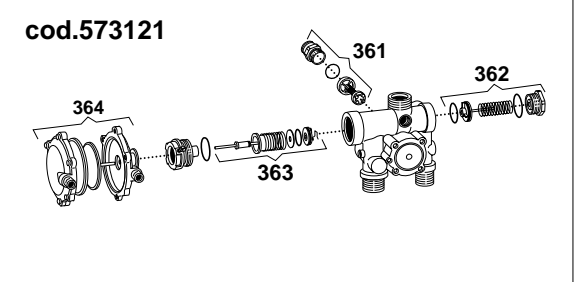
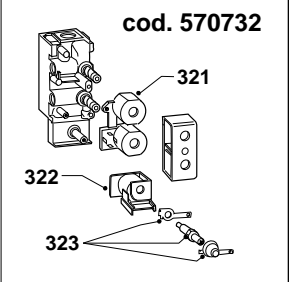
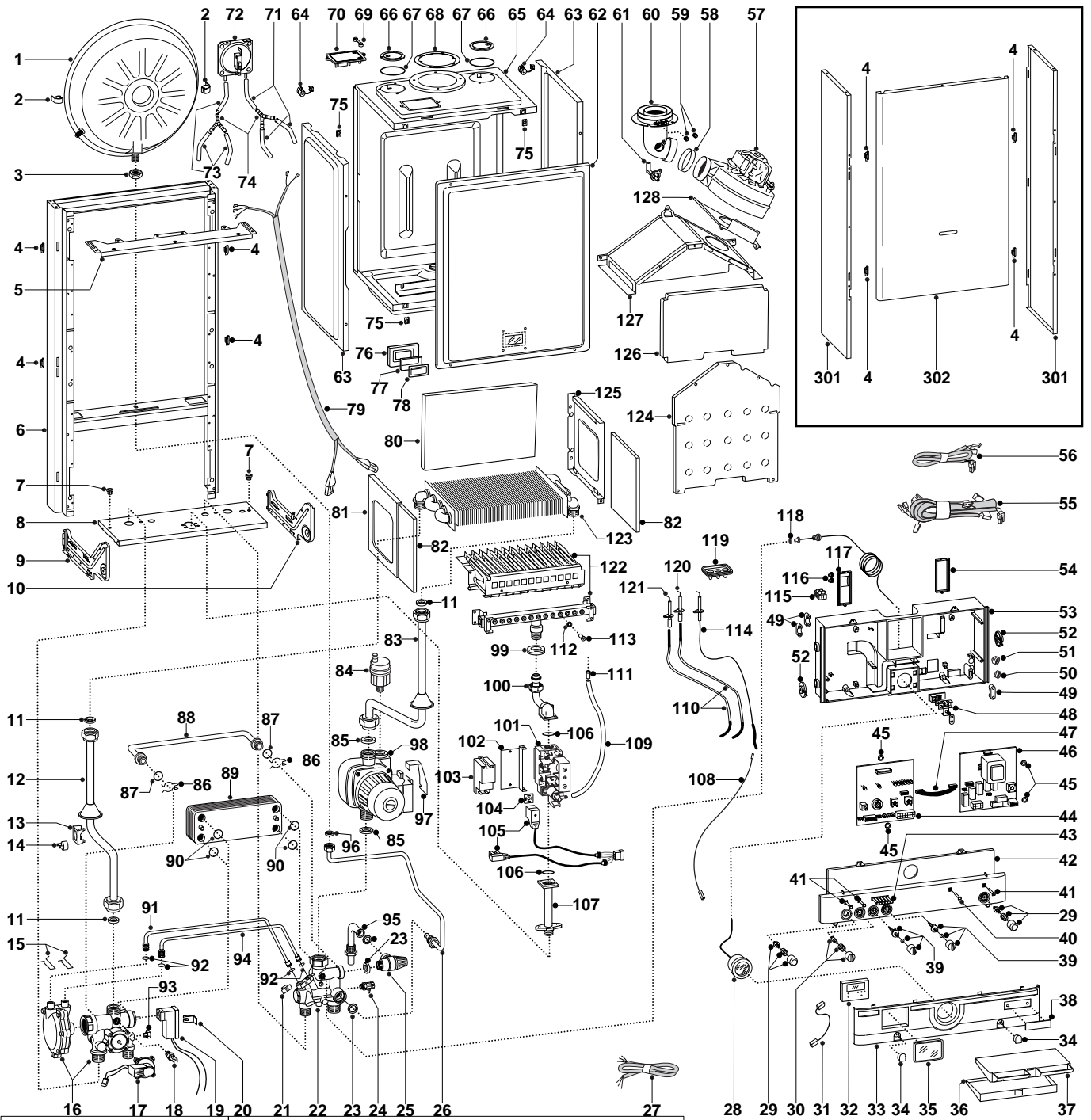
EuroCombi A23 MFFI

EuroCombi A27 MFFI

Edition 2

Current from Serial No:- 983610001 to 2320015700001





MODELS	CHARACTERISTICS	SERIAL NO: VALIDITY	REF.
A 23 MFFI UK	METHANE	983610001	A
A 23 MFFI UK	LPG	983610100	B
A 27 MFFI UK	METHANE	-----	C
A 27 MFFI UK	LPG	-----	D

PART	CODE	DESCRIPTION	REF.	NOTE
1	573294	Expansion vessel		
2	573310	Expansion vessel insert		
3	573244	3/8" lock nut		
4	574302	Casing support bracket (Plastic)		
5	572984	Casing support bracket		
6		Frame		11
7	570772	Cable holder		
8		Hydraulic support		11
9	574292	Hydraulic support bracket (L.H.)		
10	574291	Hydraulic support bracket (R.H.)		
11	573520	Gasket 3/4"		
12	997199	Pipe (Main exchanger/3-way-group)	AB	
12	997200	Pipe (Main exchanger/3-way-group)	CD	
13	997224	Overheat thermostat fixing spring		
14	997206	Overheat thermostat		
15	573809	Spring (water venturi)		
16	573121	3-way/main flow group		
17	573224	Main flow		
18	569236	Temp probe (C.H.W.)		
19	573340	Microswitch for 3-way/main flow group		
20	573824	Microswitch bracket (main flow)		
21	571838	Pipe fixing clip		
22	573163	Return group		
23	573528	Gasket 1/2"		
24	573727	Manual vent cock		
25	573172	Safety valve 3 bar 1/2"		
26	573311	Pipe (Expansion vessel)		
27	998012	Main power supply cable		
28	571649	Pressure gauge		
29	573304	Release push/On-Off push-button kit		
30	573306	Summer/Winter selector Kit		
31	997180	Connection cable		
32	997207	Time clock		
33	997144	Control panel (bottom)		
34	997138	Inspection cover		
35	997142	Cover (time clock protection)		
36	997167	Plastic cover door		
37	997168	Warning plate lid inner frame		
38	997139	Name badge		
39	573305	Regulation knob kit		
40	573370	L.E.D. cover		
41	572913	Power indicator L.E.D. lens		
42	997145	Control panel (top)		
43	572912	Temperature L.E.D. bank lens		
44	953730	P.C.B. EX C MI/FFI		
45	569711	Nylon bush 10mm		
46	952981	P.C.B. EI A-MFFI		
47	952610	P.C.B. cable		
48		Terminal board		11
49	571562	Cable clamp		
50	569458	Cable holders silicone D.2		
51	573534	Cable holder D.75		
52	571558	Control panel rotor		
53	997204	Control panel (rear)		
54	569713	Cable holder cover (R.H.)		
55	574272	High voltage wiring		
56	998046	Low voltage wiring		
57	572989	Fan	AB	
57	572990	Fan	CD	
58	573343	Fan inlet gasket		
59	573326	Flue intake plug		
60	573333	Flue exhaust manifold / header		
61	573314	Venturi (exhaust manifold/header)		

PART	CODE	DESCRIPTION	REF.	NOTE
62	573344	Sealed chamber front panel		
63		Sealed chamber side panel		11
64	570561	Fan power supply cord clamp		
65		Sealed chamber box-shaped casing		11
66	573330	Air return cover		
67	573865	Flue manifold gasket		
68	573337	Flue manifold gasket		
69	573329	Pressure gauge pressure intake cover		
70	997203	Air pressure switch support plate		
71	571575	Silicone pipe (positive signal)		
72	571651	Air pressure switch	AB	
72	571652	Air pressure switch	CD	
73	569662	Silicone pipe		
74	573327	Y-piece (air pressure)		
75	570717	Fastening spring		
76	573566	View window holder		
77	573567	View window glass		
78	569442	View window seal		
79	573017	Cable (fan/air pressure switch)		
80	573723	Back insulation panel	AB	
80	573724	Back insulation panel	CD	
81	573243	Combustion chamber panel (L.H.)		
82	573720	Side insulation panel		
83	573313	Pipe (main exchanger/pump)		
84	564254	Automatic air release valve		
85	569387	Gasket 1"		
86	573808	By-pass pipe spring		
87	571449	O-ring		
88	573245	By-pass pipe		
89	571646	Secondary exchanger (plate-type) exchanger 23kW	AB	
89	573295	Secondary exchanger (plate-type) exchanger 27kW	CD	
90	573825	O-ring (secondary exchanger)		
91	573086	Pipe (main flow switch positive signal)		
92	571807	O-ring (20-18)		
93	570615	Brass cap 1/8"		
94	573087	Pipe (main flow switch negative signal)		
95	998019	Safety valve outlet pipe		
96	573521	Gasket 3/8"		
97	997146	Circulator connector bracket		
98	997150	Pump	AB	
98	997151	Pump	CD	
99	569443	Silicone seal		
100	573289	Pipe (Gas valve to burner)		
101	570732	Gas valve (SIT tandem)		
102	573285	Spark generator support		
103	573023	Spark generator		
104	573022	Clamp		
105	998035	High voltage cable		
106	571965	O-ring (13)		
107	997202	Pipe (gas inlet)		
108	571657	Cable (detection electrode/P.C.B.)		
109	573576	Compensation tube		
110	571662	Ignition electrode cable		
111	573325	Rivet		
112	572138	Burner jet washer		
113	570248	Burner jet 1.25mm	AC	
113	570251	Burner jet 0.72mm	BD	
114	573441	Detection electrode		
115	571787	Terminal board		
116	569720	Blind grommet		
117	569714	Cable holder cover (L.H.)		
118	569390	Gasket 1/4"		
119	573336	Ignition electrode cable rubber		

PART	CODE	DESCRIPTION	REF.	NOTE
120	569560	Ignition electrode (R.H.)		
121	569561	Ignition electrode (L.H.)		
122	572271	Main burner	A	
122	572277	Main burner	B	
122	572343	Main burner	C	
122	572372	Main burner	D	
123	998138	Main exchanger	AB	
123	572835	Main exchanger	CD	
124	997766	Combustion chamber front	AB	
124	572648	Combustion chamber front	CD	
125	573242	Combustion chamber panel (R.H.)		
126	573721	Front insulation panel	AB	
126	573722	Front insulation panel	CD	
127	997767	Sealed chamber flue hood	AB	
127	573249	Sealed chamber flue hood	CD	
128	573047	Fan fixing plate	AB	
128	573465	Fan fixing plate	CD	
301	572696	Casing panel (side)		
302	997721	Casing panel (front)		
311	571444	D.H.W. actuator kit		
321	570512	Sit tandem gas valve operator coils		
322	573740	SIT tandem modureg coil		
323	573745	Gas modulator cartridge		
361	571443	Heating by-pass kit		
362	571442	D.H.W. pressure switch kit		
363	571447	3-way spring kit		
364	571446	D.H.W. diaphragm valve		
371	571547	Main flow switch diaphragm		
372	571772	Main flow switch magnet		
373	571771	Main flow switch spring		
374	571770	Main flow switch top cap		
375	573138	Main flow switch reed system		
381	569281	Burner jet 1.25 full kit (Natural gas)		12
382	569282	Burner jet 0.72 full kit (LPG)		12

PART.	NOTIFICATION OF CHANGES	
	Spares listed below are not interchangeable with those in Ed.1	
27	998012 - Wiring (power supply)	- replaces code 573335 from serial number: 983610001
56	998046 - Low voltage wiring	- replaces code 574271 from serial number: 983610001
70	997203 - Support plate (air pressure switch)	- replaces code 573332 from serial number: 983610001
95	998019 - Pipe (safety valve)	- replaces code 573176 from serial number: 983610001
101	570732 - Gas valve (SIT Tandem)	- replaces code 574232 from serial number: 983610001
102	573285 - Spark generator support	- not listed on original drawing
103	573023 - Spark generator	- replaces code 574233 from serial number: 983610001
104	573022 - Clamp	- not listed on original drawing
105	998035 - High voltage cable	- not listed on original drawing
122	572343 - Main burner (27kW - NG)	- replaces code 998621 from serial number: 983610001
123	998138 - Main exchanger (23kW)	- replaces code 572749 from serial number: 983610001
124	997766 - Panel (combustion chamber - front) (23kW)	- replaces code 572647 from serial number: 983610001
127	997767 - Sealed chamber flue hood)	- replaces code 573248 from serial number: 983610001
302	997721 - Casing panel (front)	- replaces code 997052 from serial number: 983610001
321	570512 - Operator coils (SIT Tandem)	- not listed on original drawing
322	573740 - Modureg coil (SIT Tandem)	- not listed on original drawing
323	573745 - Modulator cartridge (SIT Tandem)	- not listed on original drawing